

Code No.	Item
C12-1801-882	Canon AV-1 w/lens FD 50mm f1.8
C12-1801-862	Canon AV-1 w/lens FD 50mm f1.4
C12-1801-211	Canon AV-1 body only

# Canon AV-1

## SLR Automatic Simplicity: A Great Introduction to Canon Quality.



### Specifications

**Type:** 35mm SLR (Single-lens Reflex) camera with electronically controlled AE (Automatic Exposure).

**Format:** 24 x 36mm.

**Usable Lenses:** Canon FD (for full aperture AE) and most FL (for stopped-down AE) series lenses.

**Lens Mount:** Canon Breech-lock mount.

**Viewfinder:** Fixed eye-level pentaprism.

**Viewfinder Information:** Split-image/microprism rangefinder, shutter speed scale and meter-needle, red over- and under-exposure warning indices, battery check/camera shake warning index.

**AE Mechanism:** Aperture priority AE control.

**Selector Dial:** Five Positions:  $\Delta$  for normal aperture priority AE and automatic flash with Canon dedicated Speedlites, 60  $\frac{1}{2}$  for flash photography with other flashes, A Self for self-timer aperture priority AE and self-timer flash with Canon Speedlites,  $\frac{1}{2}$  Self for self-timer flash with other flashes, B (bulb) for time exposures.

**Self-timer:** Electronically controlled. Ten-second time lag activated by pressing shutter button. Red LED blinks to indicate operation; flashing frequency increases two sec. before shutter release. Cancellation possible by pressing battery check button.

**Flash Synchronization:** At 1/60 sec. Automatically set by switching selector dial to 60  $\frac{1}{2}$  for flashes other than Canon Speedlites. Direct contact at accessory shoe.

**Automatic Flash Control:** With Canon Speedlites. With selector dial at  $\Delta$  shutter speed is set to 1/60th second automatically. Aperture is set manually on aperture ring to same aperture as set on flash exposure calculator dial.

**Back Cover:** Fixed. Opened by pulling up rewind knob.

**Film Loading:** Easy loading multi-slot take-up spool. Emulsion side-

out winding.

**Film Advance Lever:** Single-stroke 120° throw with 30° stand-off. Winding with several short strokes possible.

**Frame Counter:** Additive type. Automatically resets to "S" upon opening back cover.

**Film Rewind:** By pressing rewind button and cranking rewind knob.

**Shutter:** Cloth, focal plane shutter.

**Shutter Release Button:** Electromagnetic, two-step button. Pressing it halfway activates the meter; pressing it all the way sets shutter in operation. With lock and cable release socket.

**Exposure Preview:** Meter needle activated by pressing the shutter button halfway.

**Shutter Speed:** Automatically controlled, steplessly, from 2 seconds to 1/1000th second. Manual settings for B (bulb) and X-synchronization speed of 1/60th sec, with flashes other than Canon Speedlites.

**ASA Film Speed Dial:** ASA 25 to ASA 1600. With lock.

**Light Metering System:** Through-the-lens Central Emphasis metering by SPC (Silicon Photocell).

**Meter Coupling Range:** EV1 (1 sec. at f/1.4) to EV18 (1/1000 sec. at f/16) with ASA 100 film and the FD 50mm f/1.4 lens.

**Exposure Correction:** Shutter speed is automatically reduced 1  $\frac{1}{2}$  steps to increase exposure by pressing backlight control switch.

**Power Source:** One 6V silver oxide (Eveready (UCAR) No. 544, JIS 4G13, Mallory PX28) or alkaline manganese (Eveready (UCAR) No.537) battery.

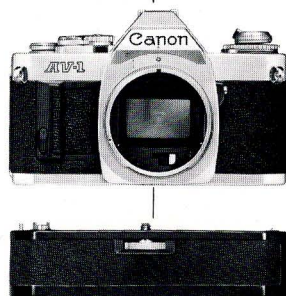
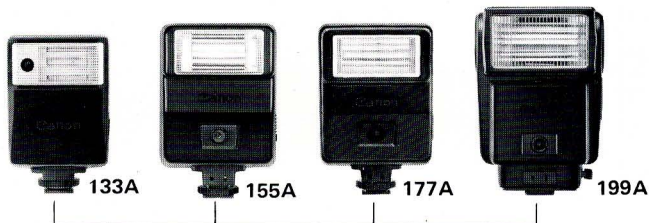
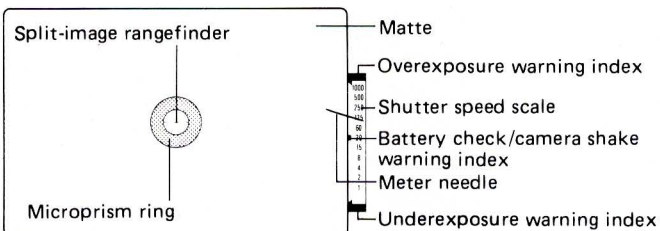
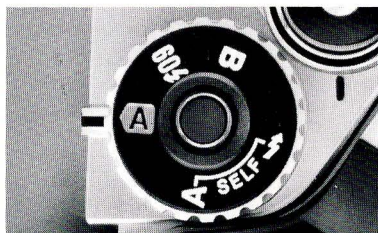
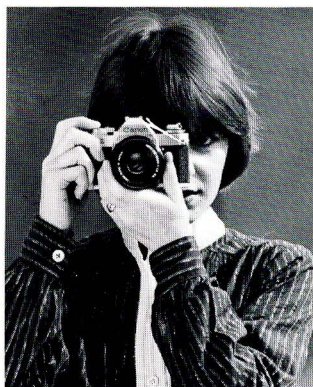
**Battery Check:** Meter needle-power level index method.

**Dimension:** 139(W) x 85(H) x 47.5mm(D) (5- $\frac{1}{2}$ " x 3- $\frac{3}{8}$ " x 1- $\frac{7}{8}$ ").

**Weight:** 490g (17 5/16 ozs.) body only, incl. battery. 640g ( 22.4 ozs. ) with FD 50 mm f1.8 lens and battery.



# SELLING POINTS



The Canon AV-1 is the perfect answer for the amateur photographer who, though he feels he has graduated from the elementary stage of photography, is daunted by the apparent complexity of SLR cameras. It introduces to such people the greater satisfaction and potential for artistic expression which 35mm photography provides. The AV-1 complements the A-series line-up of A-1, AE-1, and AT-1 and every one of the A-series models, including the new AV-1, has its own special qualities and features such as shutter priority automatic control, match needle operations, best suited to the photographic needs of your customers.

Just consider what the AV-1 has going for it:

- It's automatic — all you have to do is set the aperture, focus and shoot. Moreover, the AV-1's reliability, durability, excellent performance, and operational efficiency are based on a great deal of technical expertise in electronic control and production process for the reputed A-1 and AE-1.
- It's lightweight, compact and simple in construction, with only 525 parts, or 13% less in the number of parts and 17% less in weight compared to the AE-1.
- It's budget-priced: The AV-1 is one of the less expensive SLRs on the market. To put out a reasonably-priced camera, various selling features have been carefully considered and for the first time the aperture priority method in automatic exposure control is one of the foremost features for a Canon SLR model.
- It can be used with any of the wide range of Canon lenses. So, as your customer becomes more proficient in photography, he'll want to expand his creative horizons. And that means he'll come back to buy more lenses.

### Unique Selector Dial makes picture-taking even easier

The user will be amazed at how easy the AV-1 is to operate. Instead of the usual shutter speed dial, there is a Selector Dial which serves as the control for most functions. Now all the photographer has to do is to set the dial to the red A mark (for automatic) before setting the aperture and focusing. In fact, usually you don't have to worry about the dial — just leave it at the A mark, even for flash photography in case of using Canon Speedlites.

In addition to this setting, there are 60 setting for any flash other than Canon Speedlites, including other electronic flashes, B (Bulb) for time exposures, and two self-timer settings: (1) A Self — for self-timer without flash or with Canon Speedlites, (2) Self — for self-timer with other flashes.

### Clear, unobscured viewfinder with full exposure information

The AV-1's viewfinder incorporates a split image/microprism rangefinder and its exceptional clarity and brightness assure easy, precise focusing.

Besides this, the shutter-speed scale is a mine of information to ensure you obtain perfect results every time. Besides telling you the shutter speed chosen by the camera to correspond to your selected aperture, the needle also provides warning when the battery has run down (when battery check button is pressed). As long as it rises above the index mark located to the left of '30', the battery is OK. What's more, it serves as a good guide as to whether there is a high risk of picture blur.

### More than just a camera . . . an entire system

The AV-1 may be one of the simplest cameras to use, but that doesn't mean its potential is limited. There's a whole range of accessories and lenses to meet one's every photographic need. Practically all accessories which can be used for the AE-1 can also be used with the AV-1.

### Canon Dedicated Speedlites

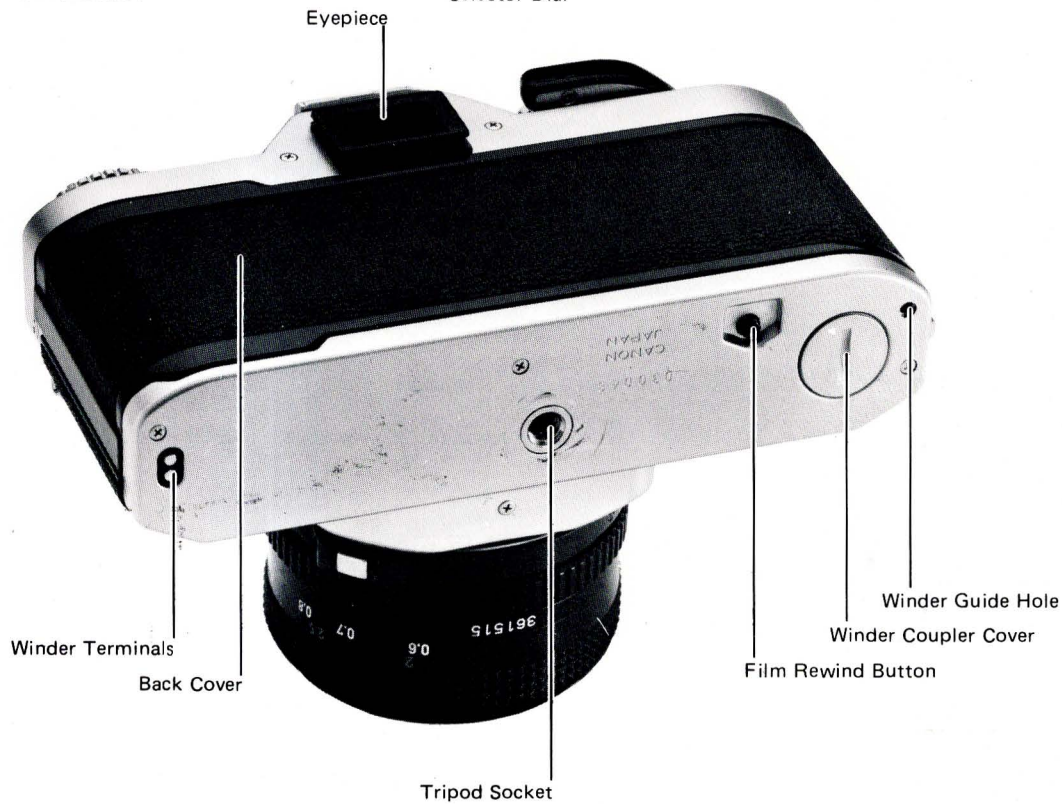
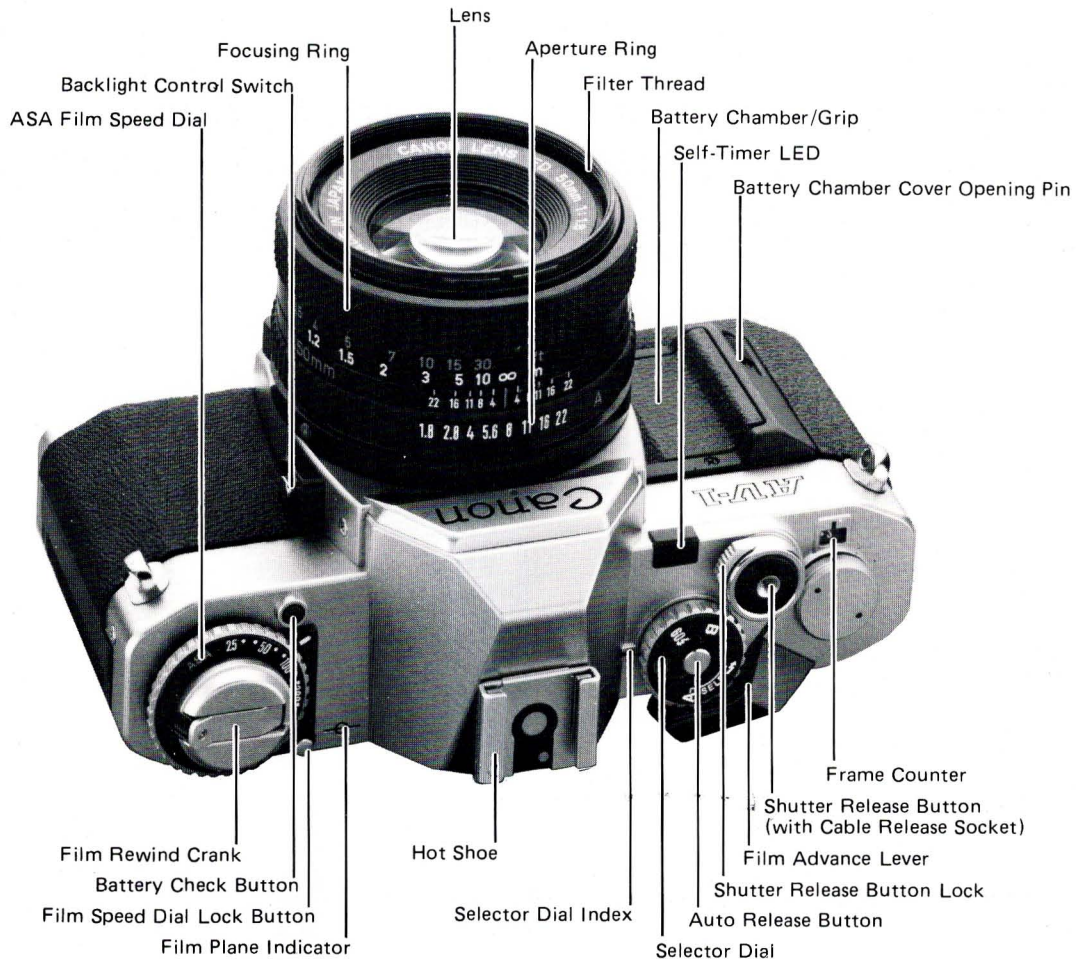
Attach any Canon Speedlite to the AV-1 and turn on the power. The Speedlite's electronic circuitry automatically sets the shutter speed to the 1/60 (flash synchronization) setting and varies light output for proper exposure with the working aperture selected on the aperture control ring.

### Power Winder A:

To keep up with fast-moving subjects, attach the Power Winder A onto the bottom of the camera. Switch it on, press and hold the shutter release button. The film will be wound at about two frames/sec, to capture those fleeting moments. Single-frame shooting is possible too. And since the AV-1 is automatic, there's no problem with exposure.



# NOMENCLATURE





# ACCESSORIES

## VIEWFINDER ACCESSORIES

CODE NO.	DESCRIPTION
5-40701-00	Magnifier S
5-41041-00	Magnifier Adaptor S
5-40712-00	Angle Finder A-2
5-40711-00	Angle Finder B
5-59212-00	Eye Cup 4S

## DIOPTRIC ADJUSTMENT LENSES

5-05072-00	Dioptric Adjustment Lens S (+3)
5-05073-00	Dioptric Adjustment Lens S (+2)
5-05051-00	Dioptric Adjustment Lens S (+1.5)
5-05075-00	Dioptric Adjustment Lens S (+1)
5-05076-00	Dioptric Adjustment Lens S (+0.5)
5-05041-00	Dioptric Adjustment Lens S (0)
5-05078-00	Dioptric Adjustment Lens S (-0.5)
5-05079-00	Dioptric Adjustment Lens S (-2)
5-05081-00	Dioptric Adjustment Lens S (-3)
5-05082-00	Dioptric Adjustment Lens S (-4)

## FLASH AND ACCESSORIES

C50-0381-221	Speedlite 533G Set (Consists of Speedlite 533G, Sensor Unit G-20, One-Touch Bracket G, Wide Adaptor 533G-24, Battery Magazine 533G)
C50-0391-211	Speedlite 577G Set (Consists of Speedlite 577G, Sensor Unit G-20, One-Touch Bracket G, Wide Adaptor 577G-24)
C50-1561	Battery Magazine for 533G
C50-1501	One-Touch Bracket G
C50-1491	Sensor Unit G20
C50-1492	Sensor Unit G100
C50-1541	Wide Adaptor 533G-24
C50-1543	Wide Adaptor 577G-24
C50-1542	Wide Adaptor 533G-20
C50-1544	Wide Adaptor 577G-20
C50-1545	Tele Adaptor 533G
C50-1546	Tele Adaptor 577G
C50-1547	Adaptor G for Motor Drive MF
C50-1571	Battery Magazine TP
C50-0581	Ni-Cd Pack TP
C50-1557	Ni-Cd Charger TP
C50-1521-221	Transistor Pack G Set (w/ Ni-Cd Pack TP, Ni-Cd Charger TP, Power Cord)
C50-1521-311	Transistor Pack G Set (w/ Battery Magazine TP, Power Cord)
C50-0321-211	Speedlite 199A Set in case w/ wide adaptor
C50-0361-211	Speedlite 177A Set in case w/ wide adaptor
C50-0311-201	Speedlite 155A Set in case
C50-0371-201	Speedlite 133A Set in case
C50-1411-001	Synchro Cord A
C50-1481	Wide Adaptor for 199A
CA4-2332	Wide Adaptor for 177A

## WINDER AND ACCESSORIES

C51-9331-001	Power Winder A in case
C58-5411-011	Battery Pack A for Power Winder A

## MISCELLANEOUS ACCESSORIES

5-03111-00	Camera Holder F
5-63061-00	Canon Release 30
5-63062-00	Canon Release 50
C58-5471-011	Canon External Battery Pack A Set (including Battery Pack A, Battery Cord C-A and Battery Cord PW) for Power Winder A
C58-5471-001	Canon External Battery Pack A
CG4-0014-001	Battery Cord C-A
CG4-0015-001	Battery Cord PW

## CASES

C46-1051	Case for AV-1 (for FD 50mm f1.4, f1.8)
4-10000-S1	Compartment Case A
4-10000-S3	Compartment Case DL
C46-0994	Action Case A
C46-1101	Case HA-2 for AV-1 (for FD 35-70mm f4)

## CLOSE-UP & PHOTOMACROGRAPHY ACCESSORIES

C26-1151-211	Canon Macrophoto Lens 20mm f3.5 in plastic case
C26-1161-211	Canon Macrophoto Lens 35mm f2.8 in plastic case
C55-9044-211	Canon Auto Bellows (including Double Cable Release)
C42-6511	Canon Double Cable Release

C55-9182-011	Canon Duplicator 35-55R (including Roll Film Stage and Attachment Ring 55) for Auto Bellows
C55-9182-012	Canon Duplicator 35-52R (including Roll Film Stage and Attachment Ring 52) for Auto Bellows
C42-6591	Canon Duplicator 16 for Auto Bellows
C42-6581	Canon Duplicator 8 for Auto Bellows
C42-6571	Canon Roll Film Stage for Duplicator 35
C42-6541	Canon Macro Stage for Auto Bellows
C42-6501	Canon Macro Auto Ring
C42-6521	Canon Focusing Rail for Copy Stand 4
4-25323-01	Extension Tube FD50 Universal in case
4-25324-01	Extension Tube FD25 Universal in case
4-25325-01	Extension Tube FD15 Universal in case
4-20601-20	Canon Copy Stand 4
4-25901-03	Canon Handy Stand F52 set
4-26201-20	Canon Photomicro Unit F
4-25117-00	Canon Macro Hood
C50-0301-221	Canon Macrolite ML-1 Set including Macrolite ML-1, Wide Adaptor ML-1 Macrolite Adaptors 55 and 52, Tightening Rings 55 and 52
Y12-6725	Wide Adaptor ML-1
Y19-0165	Macrolite Adaptor 55
Y19-0166	Macrolite Adaptor 52
Y12-6756	Tightening Ring 55
Y12-6758	Tightening Ring 52
4-25301-00	Canon Extension Tube A
4-25302-00	Canon Extension Tube B
4-25303-00	Canon Extension Tube C
4-25304-00	Canon Extension Tube 25
4-25313-00	Canon Extension Tube 150
4-25315-00	Canon Extension Tube FL15
4-25321-00	Canon Extension Tube FL25
4-25316-01	Canon Extension Tube M Set
4-25316-00	Canon Extension Tube M5
4-25317-00	Canon Extension Tube M10
4-25322-00	Canon Extension Tube M20
2-25403-00	Canon 55 Macrophoto Coupler
C42-5731	Canon FL52 Macrophoto Coupler
4-25711-00	Canon FL58 Macrophoto Coupler
4-25721-00	Canon FL55 Macrophoto Coupler
5-42011-00	Canon Lens Mount Converter A
5-42021-00	Canon Lens Mount Converter B
5-42031-00	Canon Lens Mount Converter E
5-42071-00	Canon Lens Mount Converter P
0-00000-33	Canon Lens Mount Converter N
C-54-3234	Canon 58mm Close-Up Lens 500T
5-43231-01	Canon 58mm Close-Up Lens 450
5-43241-01	Canon 58mm Close-Up Lens 240
5-43251-01	Canon 48mm Close-Up Lens 450
5-43331-01	Canon 48mm Close-Up Lens 240
5-43571-00	Canon 55mm Close-Up Lens 450
5-43561-00	Canon 55mm Close-Up Lens 240
C54-3731	Canon 52mm Close-Up Lens 240 in plastic case
C54-3741	Canon 52mm Close-Up Lens 450 in plastic case
5-59042-20	Canon Bellows FL
5-59181-01	Canon Slide Duplicator 55 for Bellows FL
5-59181-02	Canon Slide Duplicator 52 for Bellows FL
CA4-2430	Attachment Ring 52 for Handy Stand F
43-6370	Attachment Ring 48 for Slide Duplicator
CA4-2418	Attachment Ring 52 for Slide Duplicator
43-6371	Attachment Ring 55 for Slide Duplicator
43-6372	Attachment Ring 58 for Slide Duplicator
CA4-2420	Manual Diaphragm Adaptor
C55-9271	Step-up Ring 52-55
<b>BODY COVER</b>	
4-52021-00	Camera Cover R-F
<b>STRAP</b>	
5-61141-00	Neck Strap 7 with pad
9-00700	The ABC's of Picture-Taking Ease

**PLEASE NOTE: For further information on accessories please see the sections as follows:**

**Sect. 2: Canon Interchangeable Lenses**

**Sect. 3: Canon SLR System Accessories**

**Sect. 6: Cross-Reference Charts  
(including Canon Filters, Cases, Etc.)**